

Ария Руфи с хором

из оперы-оратории «Ликующая Руфа»

АНТОНИО ВИРАЛЬДИНИ
(1705-1741)

Flauto *mp legato* *poco a poco cresc.*

Oboe *mp legato*

Corni in F *mp legato* *poco a poco cresc.*

Trombi in B *mf marcato* *poco a poco cresc.*

Tromboni *mf marcato*

Arpa *mp* *poco a poco cresc.*

Soprano Solo

Soprano Alti

Tenore Bassi

Timpani

Organ

Piatti

Violini I *mp legato* *poco a poco cresc.*

Violini II *mp legato* *poco a poco cresc.*

Alti *divisi* *mp* *poco a poco cresc.*

Celli *mp legato* *poco a poco cresc.*

Bassi *mp legato* *poco a poco cresc.*

Flauto

Flauto staff notation. Measure 9 has a dynamic marking *f*. Measure 13 is indicated by a bracket.

Corni in F

Corni in F staff notation. Measure 9 has a dynamic marking *f*.

Trombi in B

Trombi in B staff notation. Measure 9 has a dynamic marking *f* with a hairpin.

Tromboni

Tromboni staff notation. Measure 9 has a dynamic marking *f* with a hairpin.

Arpa

Arpa staff notation. Measure 9 has a dynamic marking *f* with a hairpin. Measure 10 has a dynamic marking *mp*.

Soprano Solo

Soprano Solo staff notation.

Timpani

Timpani staff notation. Measure 9 has a dynamic marking *f*. Measure 10 has a dynamic marking *p*.

Piatti

Piatti staff notation. Measure 9 has a dynamic marking *f*.

Violini I

Violini I staff notation. Measure 9 has a dynamic marking *f* with a hairpin. Measure 10 has a dynamic marking *mp*.

Violini II

Violini II staff notation. Measure 9 has a dynamic marking *f* with a hairpin. Measure 10 has a dynamic marking *p*. Measure 11 has a dynamic marking *simile*.

Alti

Alti staff notation. Measure 9 has a dynamic marking *f* with a hairpin. Measure 10 has a dynamic marking *mp*. Measure 11 has a dynamic marking *uni.*. Measure 12 has a dynamic marking *div.*. Measure 13 has a dynamic marking *simile*.

Celli

Celli staff notation. Measure 9 has a dynamic marking *f* with a hairpin. Measure 10 has a dynamic marking *p*. Measure 11 has a dynamic marking *uni.*. Measure 12 has a dynamic marking *div.*. Measure 13 has a dynamic marking *simile*.

Bassi

Bassi staff notation. Measure 9 has a dynamic marking *f* with a hairpin. Measure 10 has a dynamic marking *mp*.

Oboe

mp

17

21

Corn in F

mf

Soprano Solo

Violini I

Violini II

Alti

uni. *div.* *uni.* *div.*

Celli

div. *uni.* *div.*

Bassi

Flauto

25

mf

29

Corn in F

Soprano Solo

Violini I

mf *legato*

Violini II

div.

Alti

Celli

Bassi

poco a poco cresc.

tr *33*

mp *f*

mp *cresc.* *f*

mp *cresc.* *f*

cresc. *f*

glis. *glis.*

p *cresc.* *mf*

ff

f

cresc.

cresc. *uni*

cresc. *mf marcato*

cresc. *mf marcato*

cresc. *f*

37 41

Arpa

Soprano Solo

Timpani

Organ

Violini I

f legato

Alti

Celli

Bassi

Arpa

Arpa musical score. The staff shows a melodic line with a dynamic marking of *dim.* (diminuendo) starting at measure 45. The key signature is three flats (B-flat, E-flat, A-flat) and the time signature is 4/4.

Soprano Solo

Soprano Solo musical score. The staff shows a melodic line with a dynamic marking of *mf* (mezzo-forte) starting at measure 45. The key signature is three flats (B-flat, E-flat, A-flat) and the time signature is 4/4.

Soprano Alti

Soprano Alti musical score. The staff shows a melodic line with a dynamic marking of *f* (forte) starting at measure 45. The key signature is three flats (B-flat, E-flat, A-flat) and the time signature is 4/4.

Tenore Bassi

Tenore Bassi musical score. The staff shows a melodic line with a dynamic marking of *f* (forte) starting at measure 45. The key signature is three flats (B-flat, E-flat, A-flat) and the time signature is 4/4.

Timpani

Timpani musical score. The staff shows a melodic line with a dynamic marking of *mf* (mezzo-forte) starting at measure 45. The key signature is three flats (B-flat, E-flat, A-flat) and the time signature is 4/4.

Organ

Organ musical score. The staff shows a melodic line with a dynamic marking of *mf* (mezzo-forte) starting at measure 45. The key signature is three flats (B-flat, E-flat, A-flat) and the time signature is 4/4.

Piatti

Piatti musical score. The staff shows a melodic line with a dynamic marking of *mf* (mezzo-forte) starting at measure 45. The key signature is three flats (B-flat, E-flat, A-flat) and the time signature is 4/4.

Violini I

Violini I musical score. The staff shows a melodic line with a dynamic marking of *mf* (mezzo-forte) starting at measure 45. The key signature is three flats (B-flat, E-flat, A-flat) and the time signature is 4/4.

Violini II

Violini II musical score. The staff shows a melodic line with a dynamic marking of *mp* (mezzo-piano) starting at measure 45. The key signature is three flats (B-flat, E-flat, A-flat) and the time signature is 4/4.

Alti

Alti musical score. The staff shows a melodic line with a dynamic marking of *mp* (mezzo-piano) starting at measure 45. The key signature is three flats (B-flat, E-flat, A-flat) and the time signature is 4/4.

Celli

Celli musical score. The staff shows a melodic line with a dynamic marking of *mp* (mezzo-piano) starting at measure 45. The key signature is three flats (B-flat, E-flat, A-flat) and the time signature is 4/4.

Bassi

Bassi musical score. The staff shows a melodic line with a dynamic marking of *mp* (mezzo-piano) starting at measure 45. The key signature is three flats (B-flat, E-flat, A-flat) and the time signature is 4/4.

Oboe

mf

Arpa

mf

Soprano Solo

Soprano Alti

Tenore Bassi

Violini I

Violini II

Alti

div. arco

Celli

pizz. uni.

Bassi

Arpa

57

61

Soprano Solo

Soprano Alti

Tenore Bassi

Organ

mf

Piatti

mp

Violini I

Violini II

Alti

uni. pizz.

Celli

div.

Bassi

The musical score for page 8 is arranged in a system of staves. The Arpa part begins at measure 57 and continues with a melodic line. The Soprano Solo part has a melodic line starting at measure 61. The Soprano Alti and Tenore Bassi parts provide harmonic support with chords. The Organ part has a melodic line starting at measure 61. The Piatti part has a melodic line starting at measure 61. The Violini I and Violini II parts provide harmonic support with chords. The Alti part has a melodic line starting at measure 61. The Celli part has a melodic line starting at measure 61. The Bassi part has a melodic line starting at measure 61. The score includes various musical notations such as notes, rests, and dynamic markings.

Corni in F



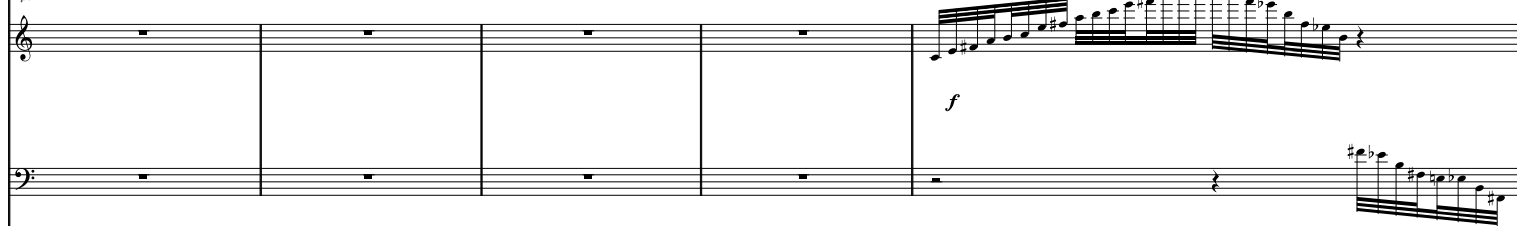
Trombi in B



Tromboni



Arpa



Soprano Solo



Soprano Alti



Tenore Bassi



Organ



Violini II



Alti



Celli



Bassi



Flauto

Corni in F

Arpa

Soprano Solo

Soprano Alti

Tenore Bassi

Organ

Piatti

Violini II

Alti

Celli

Bassi

6

73

tr

77

mf

p

Oboe

81

f

Trombi in B

f

Tromboni

f

Arpa

glis.

Soprano Solo

Soprano Alti

f

Tenore Bassi

poco a poco cresc.

f

Timpani

Organ

f

Piatti

f

Violini I

mf legato poco a poco cresc.

f

Violini II

poco a poco cresc.

mf

Alti

poco a poco cresc.

uni. div. f

Celli

poco a poco cresc.

mf

Bassi

poco a poco cresc.

f

[illegible]

Flauto

89 *ff* *tr*

Cori in F

ff

Trombi in B

ff

Tromboni

ff

Arpa

ff

Soprano Solo

Soprano Alti

ff

Tenore Bassi

ff

Timpani

Organ

Piatti

Violini I

ff

Violini II

ff

Alti

ff

Celli

ff

Bassi

ff